

Civil 3D State Kit Webinar Series

FDOT Survey CAiCE Design Deliverables in Civil 3D Part 2 of 2



Topics will we cover today:

LandXML Visualizer tool
LandXML Grouper tool
Civil 3D CAiCE Translator

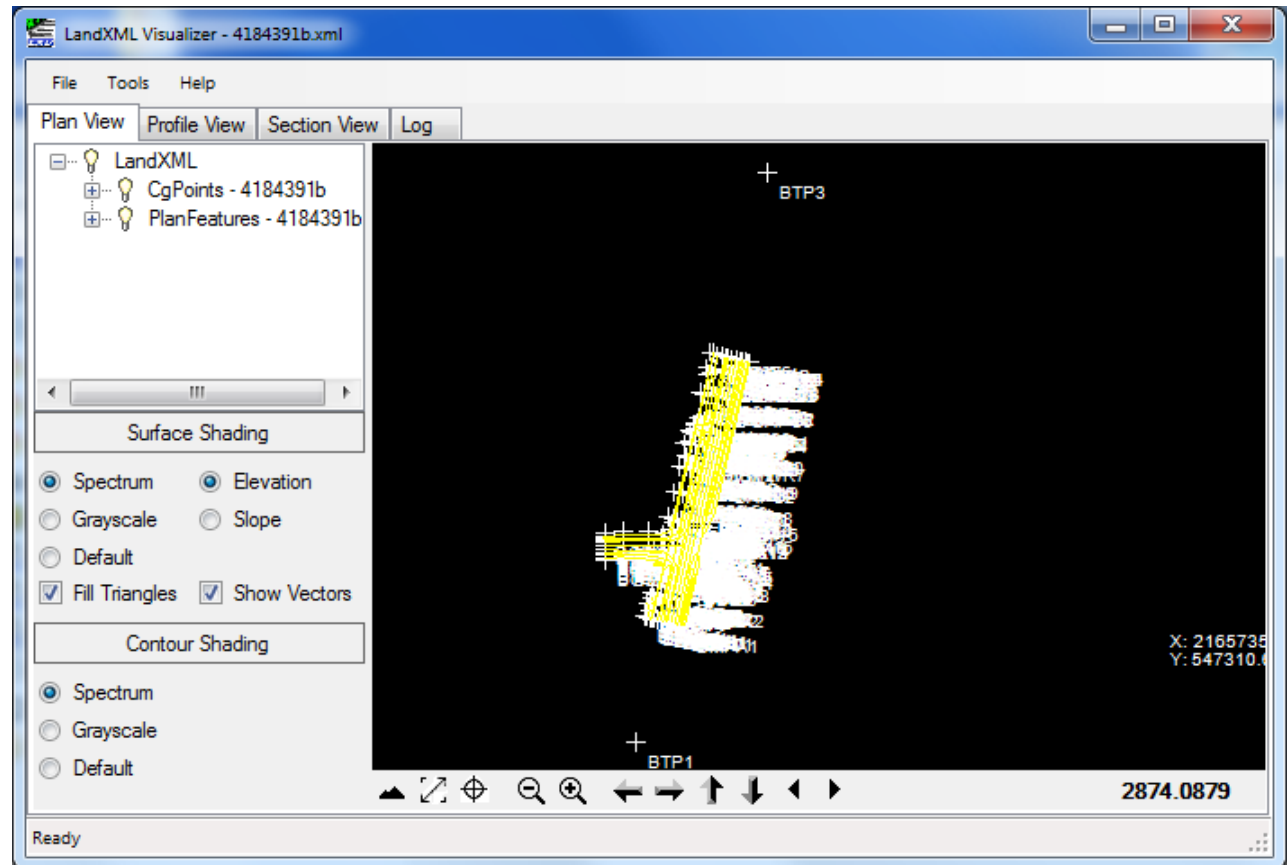
Autodesk Civil 3D:
Survey Database
Database Setup
Import LandXML
SURVRD file
Edit Figures
Point Groups
Point Display

Create Model Files for Deliverables
TOPORD
GDTMRD

FDOT2016.C3D Desktop Folder

LAND XML Visualizer

- _FDOT2016.C3D
- Create 3D Deliverables
- Create Project
- ECSO GoToMeeting
- ECSO Website
- FDOT Civil 3D Quick Clips
- FDOT XML Signing
- File Checker
- Land XML Converter
- Land XML Grouper
- Land XML Visualizer
- PEDDS Client
- Sheet Set Organizer
- Submit a Support Request



FDOT2016.C3D Desktop Folder















LAND XML Grouper

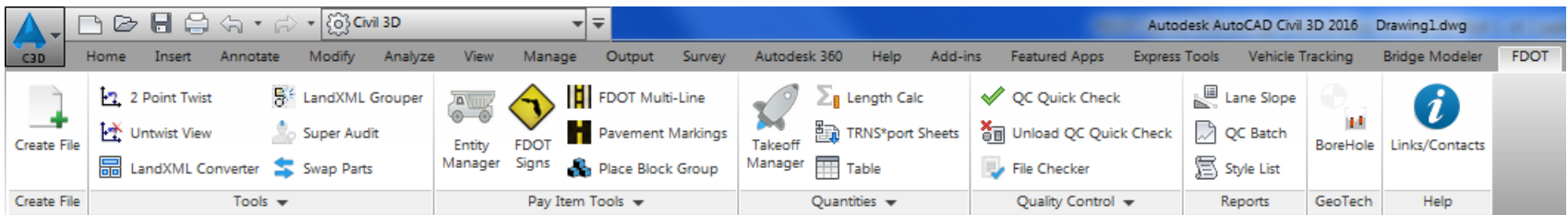
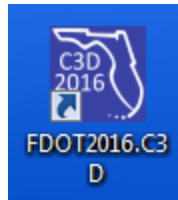
- _FDOT2016.C3D
- Create 3D Deliverables
- Create Project
- ECSSO GoToMeeting
- ECSSO Website
- FDOT Civil 3D Quick Clips
- FDOT XML Signing
- File Checker
- Land XML Converter
- Land XML Grouper
- Land XML Visualizer
- PEDDS Client
- Sheet Set Organizer
- Submit a Support Request

Name	Zone	Code	Attribute	Y (Northing)	X (Easting)	Z (Elevation)	Description
BTP2		IRC	feature	2164347.1552	547741.2069	205.3725	SET 1/2" IRC STAMPED S
BTP3		IRC	feature	2164544.3669	548815.4701	219.6077	SET 1/2" IRC STAMPED S
BTP1		IRC	feature	2164142.8213	547079.045	181.5651	SET 1/2" IRC STAMPED S
BGS1			ground	2164169.5546	547464.3871	201.6176	
BWDL1			feature	2164178.1525	547459.2797	201.6199	
BTBA1			ground	2164188.3211	547456.9092	201.3595	
BGS2			ground	2164199.2536	547454.6454	198.0629	
BTSA1			ground	2164209.6241	547452.4196	194.7728	
BTSB1			ground	2164219.8388	547450.5361	195.0261	
BTBB1			ground	2164227.7658	547448.9552	195.8771	
BSHA1			ground	2164233.5504	547447.6319	196.2853	
BAPA1			ground	2164238.3615	547446.9144	196.6004	
BAC1			ground	2164250.034	547444.4921	196.8765	
BAPB1			ground	2164261.5519	547442.0643	197.0538	
BGS3			ground	2164266.024	547441.3471	196.7617	
BTBC1			ground	2164270.8471	547440.2957	196.5687	
BDA1			ground	2164276.3901	547439.3527	195.9799	
RDR1			ground	2164278.1759	547438.8343	194.8372	

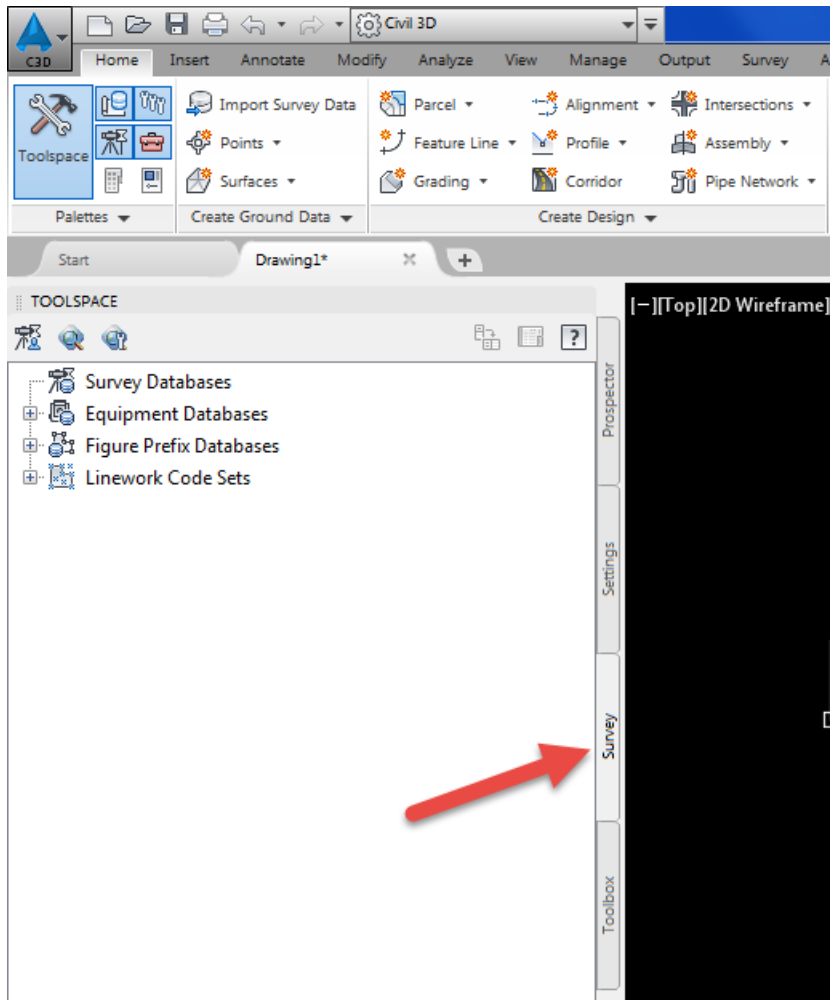
FDOT2016.C3D Desktop Folder

Start Civil 3D using the FDOT Civil 3D State Tool Kit

-  _FDOT2016.C3D
-  Create 3D Deliverables
-  Create Project
-  ECSO GoToMeeting
-  ECSO Website
-  FDOT Civil 3D Quick Clips
-  FDOT XML Signing
-  File Checker
-  Land XML Converter
-  Land XML Grouper
-  Land XML Visualizer
-  PEDDS Client
-  Sheet Set Organizer
-  Submit a Support Request

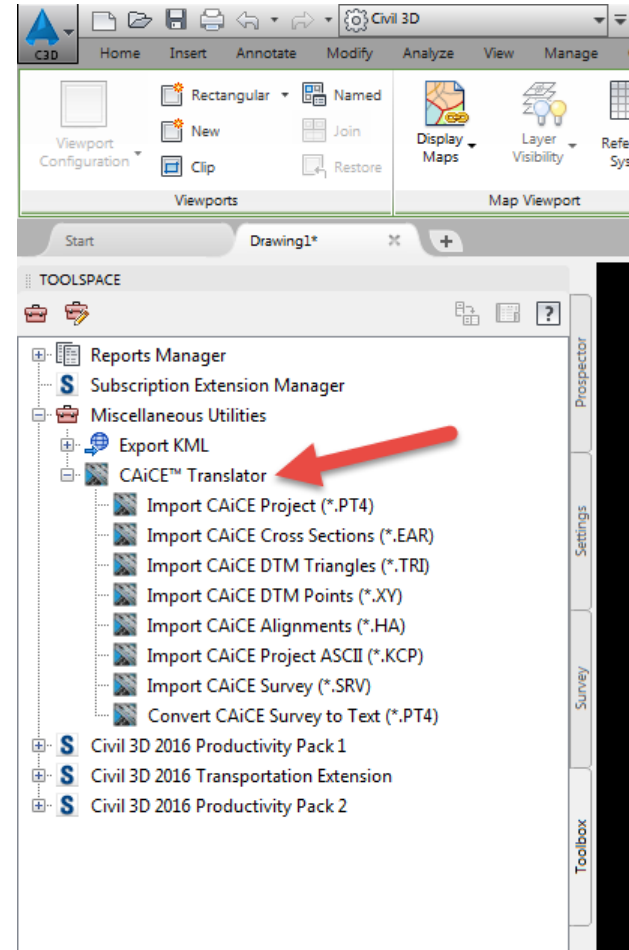
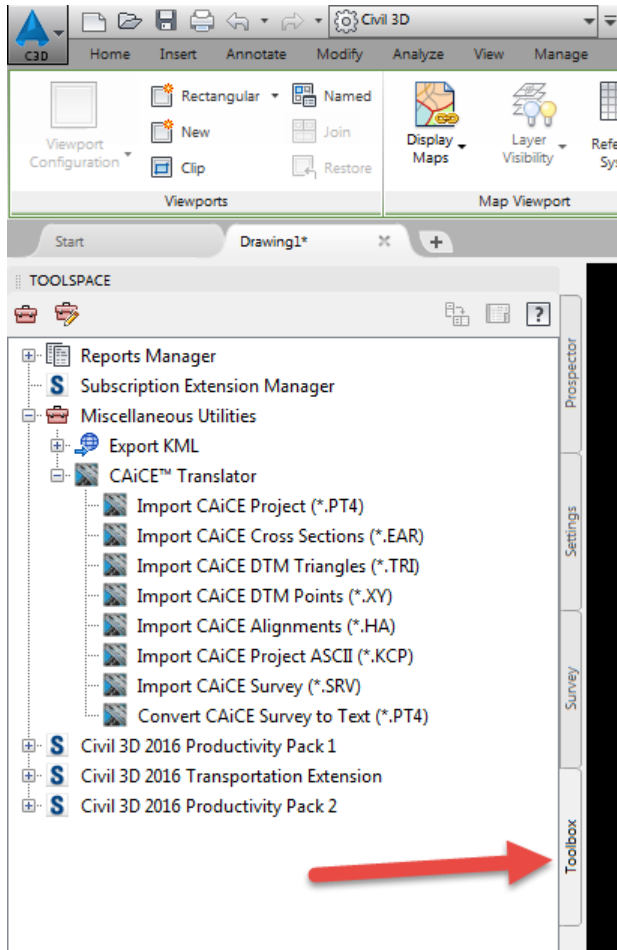


Civil 3D: Survey Tab in Toolspace



Civil 3D:

Toolbox Tab in Toolspace



Miscellaneous Utilities: CAiCE Translator

Civil 3D:

CAiCE Translator

You can use the CAiCE™ Translator commands to import specified elements of a CAiCE project into an AutoCAD Civil 3D drawing. The resulting entities are full-featured AutoCAD Civil 3D objects.

Import a CAiCE Project Database (PT4)

Import CAiCE Cross Section Data (EAR)

Import CAiCE Surface Triangles (TR!)

Import CAiCE Binary Surface Data (XY#)

Import CAiCE Horizontal Alignment Data (HA#)

Import COGO Objects from a CAiCE Project (KCP)

Import CAiCE Survey Data (SRV)

Convert a CAiCE Survey (PT4) to a Text File

Civil 3D:

CAiCE Translator

Import a CAiCE Project Database (PT4)

Import an entire CAiCE project into an AutoCAD Civil 3D drawing. The PT4 file is a CAiCE project file that can contain any of the following data:

Survey

- Points**
- Name**
- Feature Codes**
- Description**
- Comments**
- Control Point Name**
- Tiff File Name**
- Annotations**
- Geometry Sheets**

Survey Chains

- Name**
- Feature Codes**
- Text Chain Points**
- Numeric Chain Reference List**
- Description**
- Comments**
- Annotations**

Lets get started...

Topics we covered today:

LandXML Visualizer tool
LandXML Grouper tool
Civil 3D CAiCE Translator

Autodesk Civil 3D:
Survey Database
Database Setup
Import LandXML
SURVRD file
Edit Figures
Point Groups
Point Display

Create Model Files for Deliverables
TOPORD
GDTMRD

Thanks for attending today's webinar

Questions contact:

**Doug Medley
CADDESK Consulting Resources
850-261-2585
dmm@caddesk.com**

