



PROJECT DEVELOPMENT & ENVIRONMENT (PD&E) STUDY

Interstate 95 (I-95/SR 9) • From South of Hallandale Beach Boulevard (SR 858) to North of Hollywood Boulevard (SR 820)
Broward County, FL • FPID No.: 436903-1-22-02 • ETDM No.: 14254

WELCOME



- ❑ Share information with the public
- ❑ Serves as an official forum
 - ✓ Review maps, drawings, and other information
 - ✓ Join the PD&E Study mailing list
 - ✓ Receive comments to become part of the project's public record



TRANSPORTATION DEVELOPMENT PROCESS

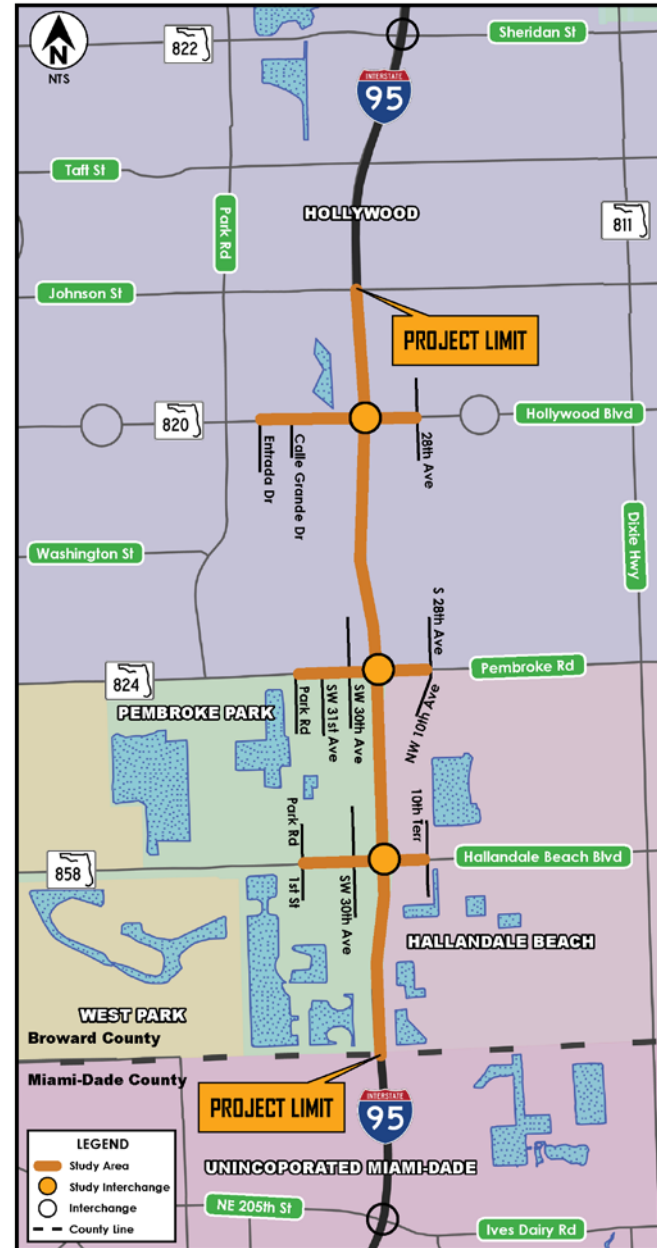


PHASE 2

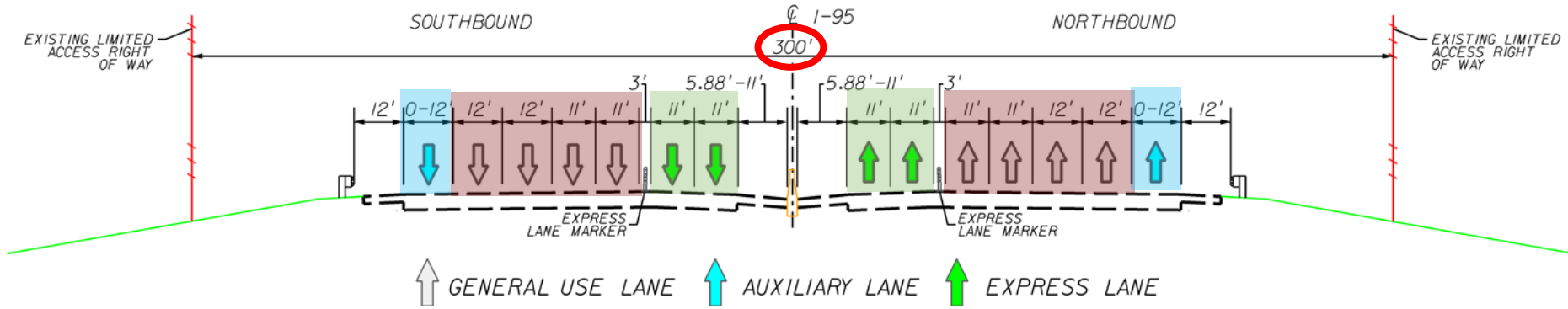
PHASE 2 PD&E Study

- ❑ Formal FDOT process to ensure that consideration is given to environmental impacts, social impacts, public input, engineering design and project costs
- ❑ Required to satisfy the National Environmental Policy Act
- ❑ Involves engineering analysis and environmental evaluation, all accomplished within the context of a public participation plan
- ❑ Includes data collection, traffic forecasts, alternatives development, engineering analyses, environmental analyses and documentation
- ❑ Involves the preparation of preliminary engineering and environmental documentation

- ❑ 3 Miles
- ❑ 3 Interchanges
- ❑ Broward County, Florida
- ❑ Municipalities:
 - ✓ Hallandale Beach
 - ✓ Pembroke Park
 - ✓ Hollywood



Existing Corridor Characteristics



Hallandale Beach Boulevard



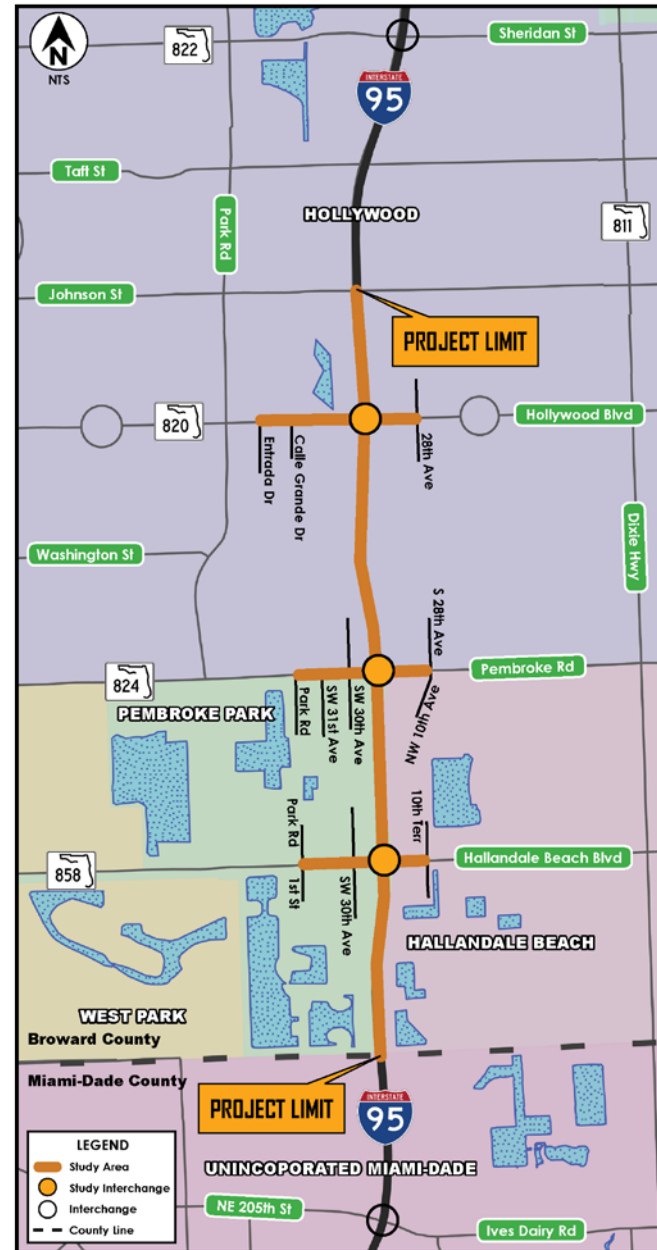
Pembroke Road



Hollywood Boulevard



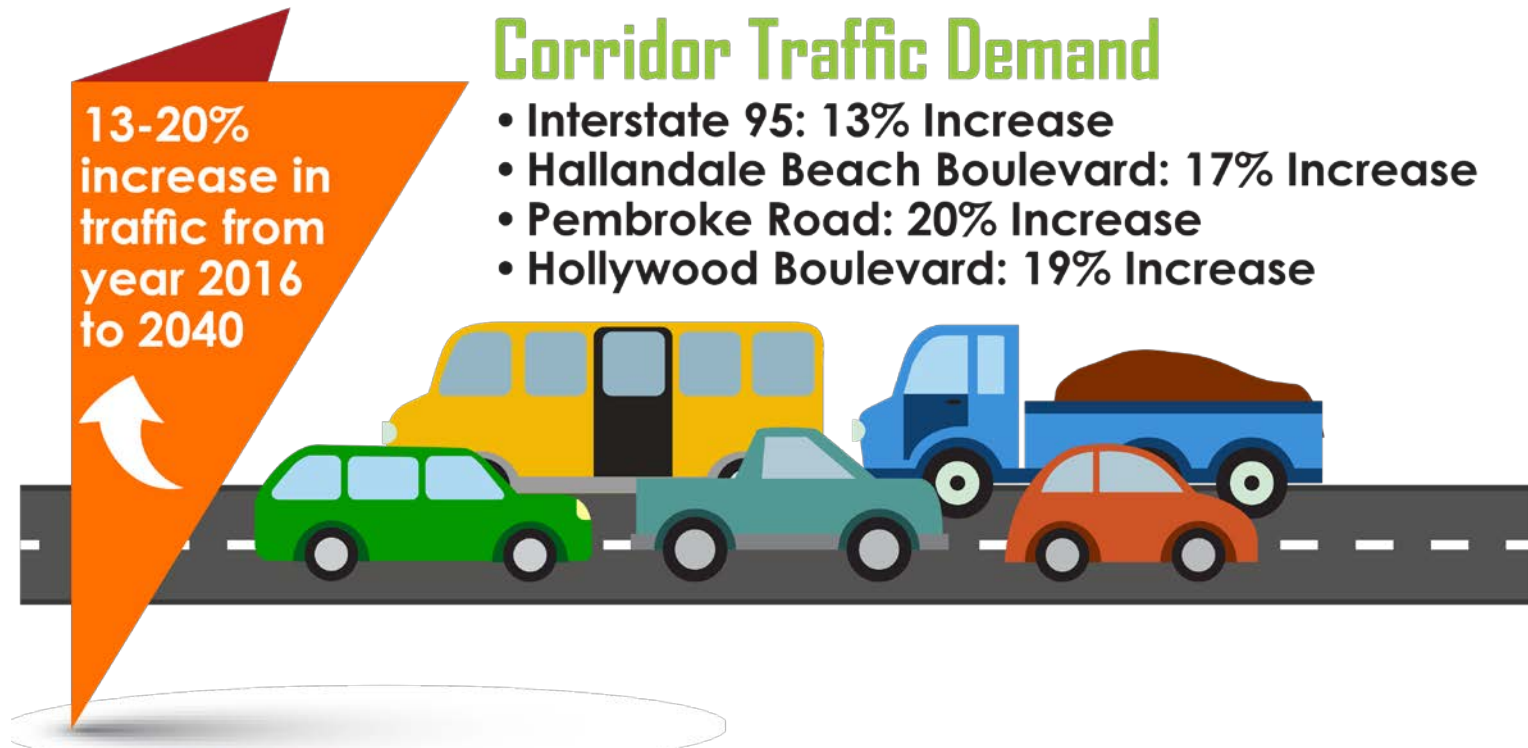
- ❑ Potential Interchange Ramp Modifications
- ❑ Intersection Improvements
- ❑ Evaluate the social, economic, physical and environmental impacts associated with the potential improvements



□ Purpose

The primary need for this project is to increase capacity at the interchanges and at adjacent intersections along Hallandale Beach Boulevard, Pembroke Road and Hollywood Boulevard. Secondary considerations for the purpose and need of this project include: traffic demand, safety, transit operations, travel time reliability, population growth, modal interrelationships, emergency evacuation, and long-term mobility.

□ Needs



- ❑ Study area has experienced greater overall number of crashes than what would typically be anticipated on similar facilities.

Collisions due to heavy congestion and constant stop-and-go

Safety

- Congestion will lead to increase in accidents.

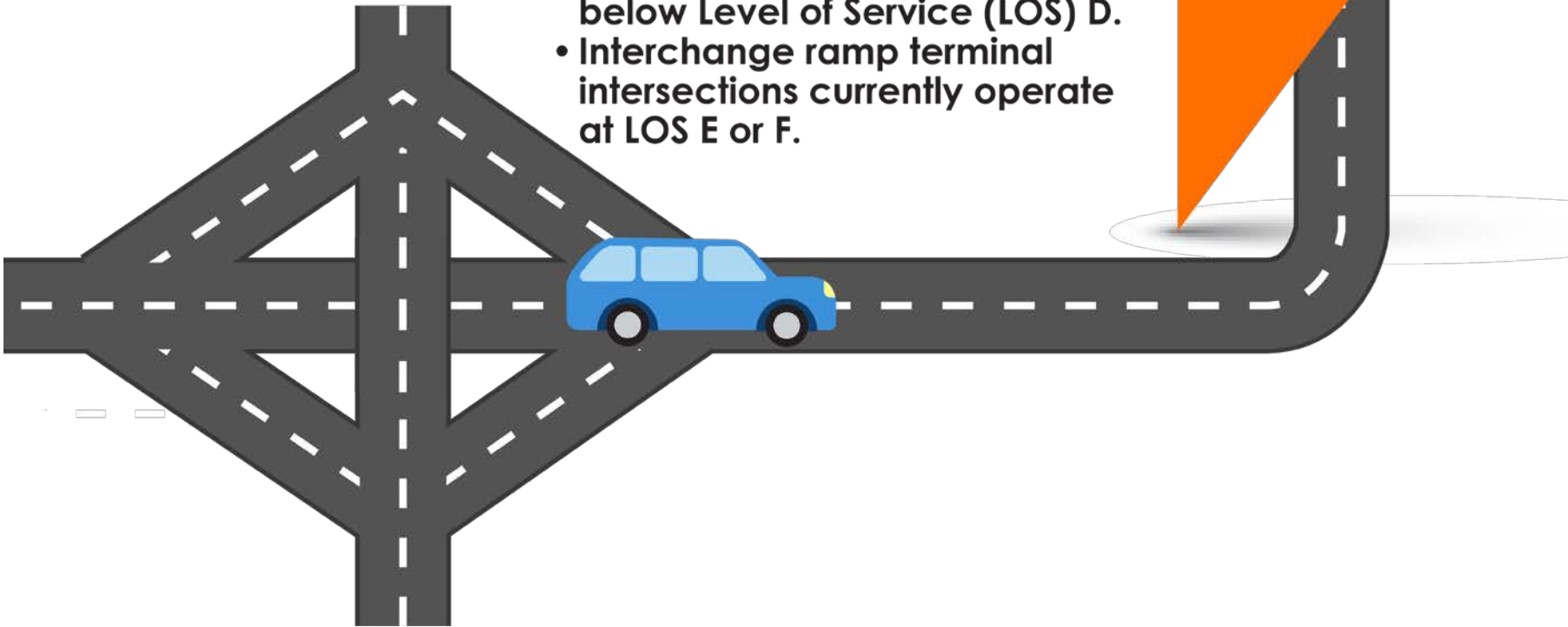


Interchange Capacity Needs

- I-95 freeway segments between interchanges currently operate below Level of Service (LOS) D.
- Interchange ramp terminal intersections currently operate at LOS E or F.



Additional capacity is needed now



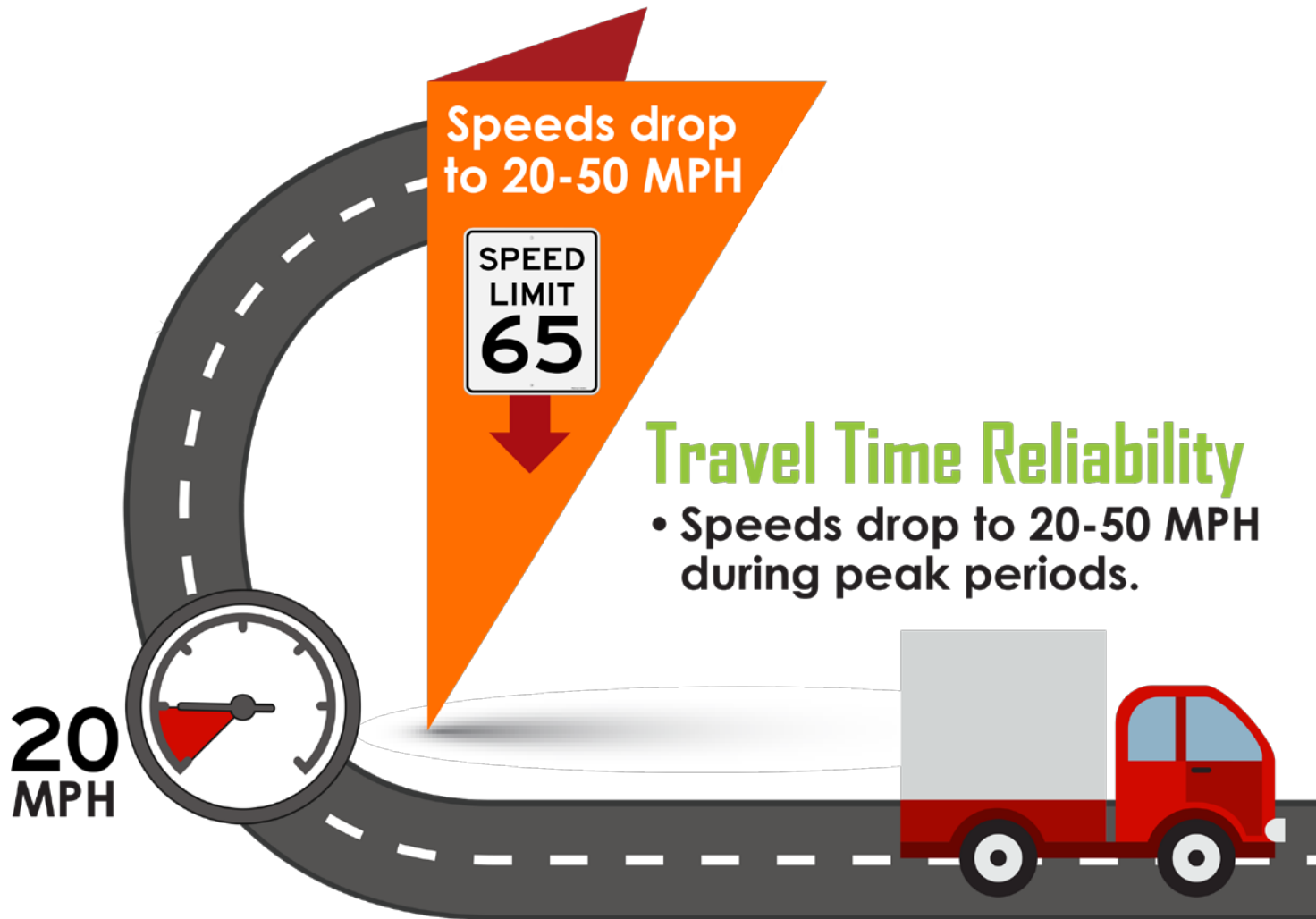
Impacting
transit
operations

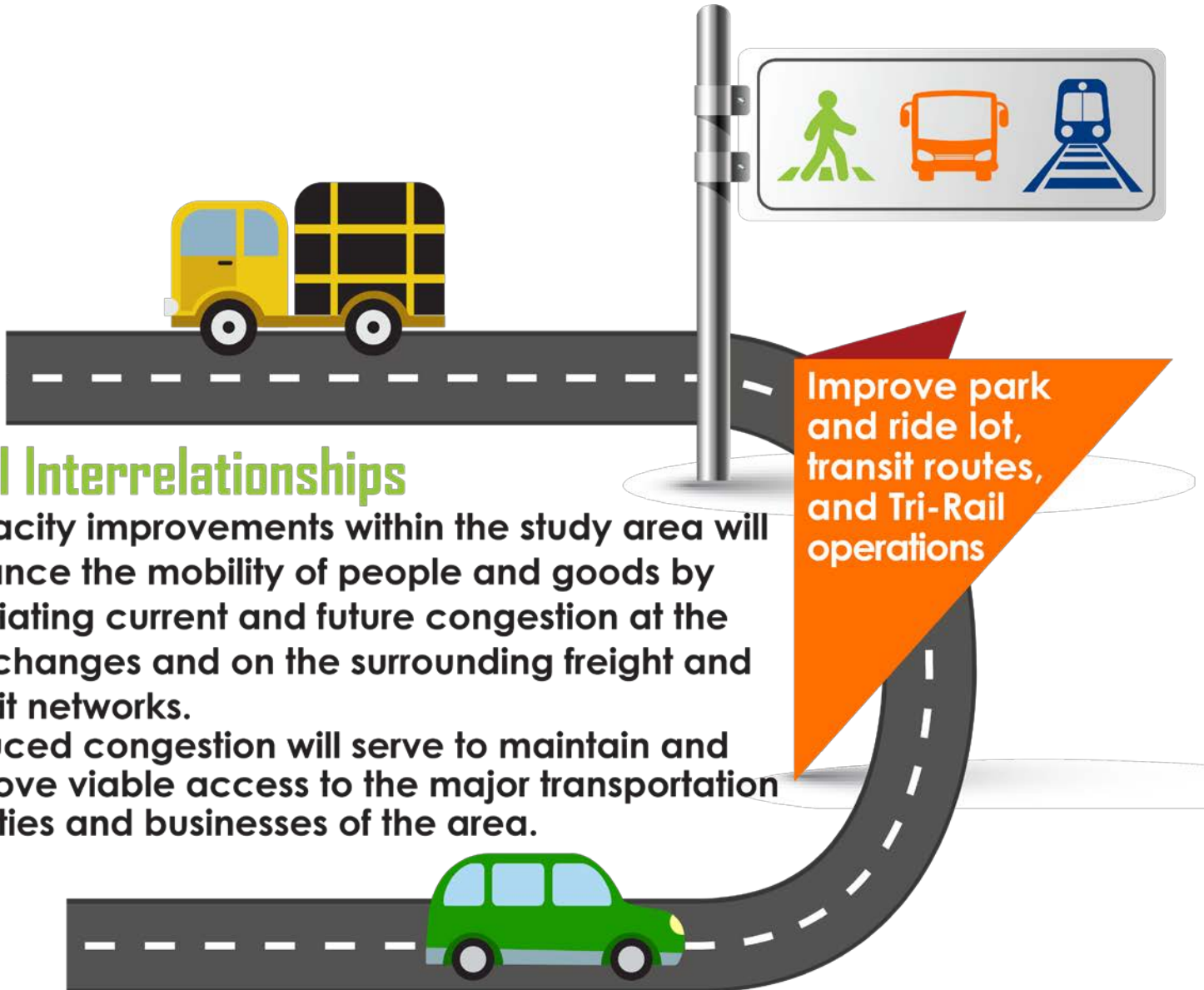


Transit Operations

- Existing congestion impacts transit operations.
- Additional capacity provides opportunities for transit expansions.





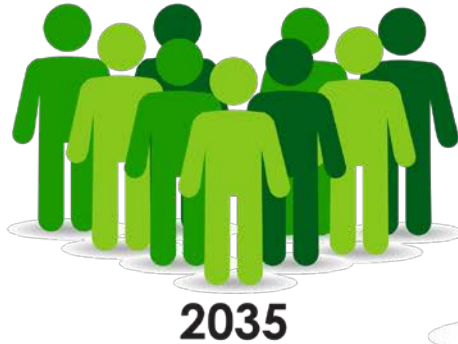


Modal Interrelationships

- Capacity improvements within the study area will enhance the mobility of people and goods by alleviating current and future congestion at the interchanges and on the surrounding freight and transit networks.
- Reduced congestion will serve to maintain and improve viable access to the major transportation facilities and businesses of the area.

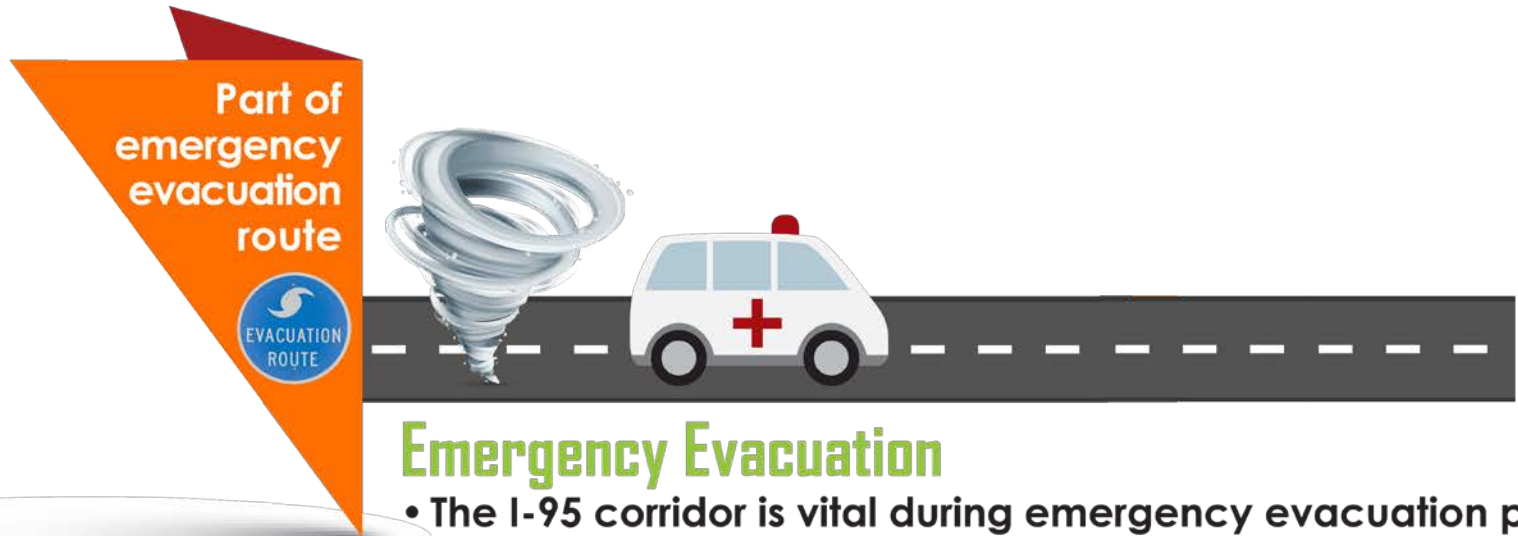
Population Growth

- Broward County population will increase by 29% between 2005 and 2035.
- Broward County employment will grow by 37%.



Increase in population will result in increased traffic





Emergency Evacuation

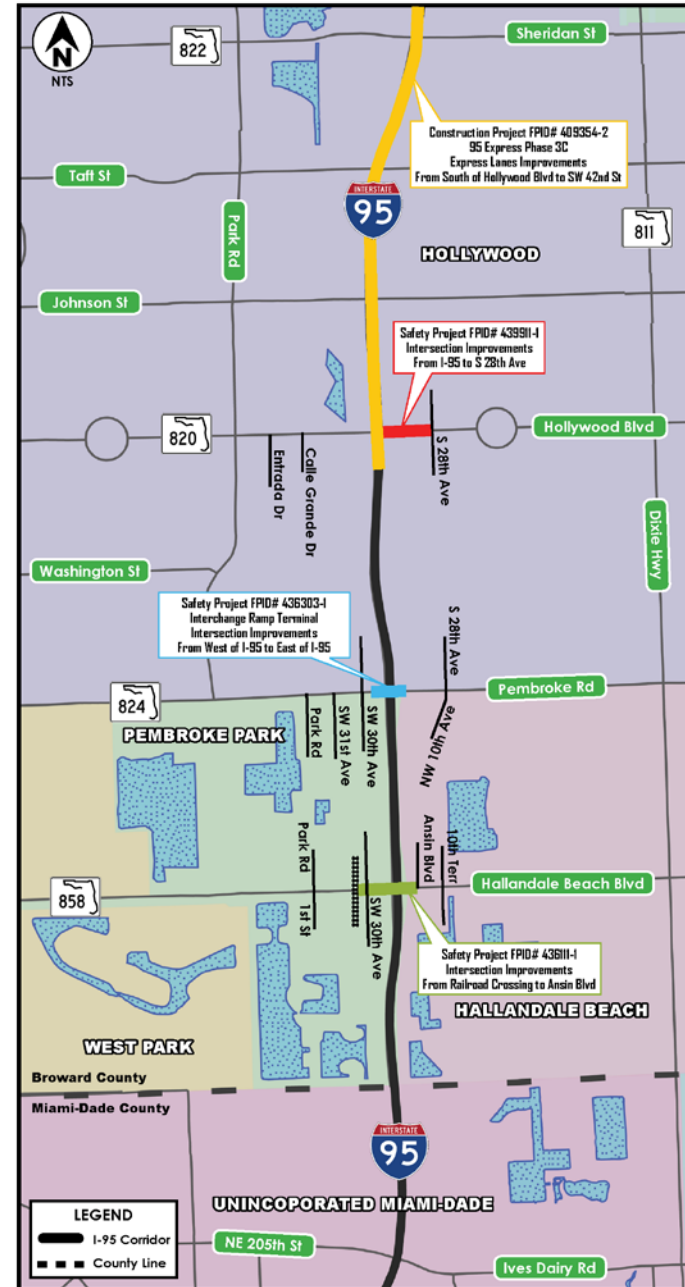
- The I-95 corridor is vital during emergency evacuation periods.
- Hallandale Beach Boulevard, Pembroke Road, and Hollywood Boulevard are also part of the emergency evacuation routes network.

Long-Term Mobility

- Residents and workers in the area will face severe congestion impacting their economic viability and quality of life.
- Congestion will lead to increase in accidents.



- ❑ Communication with various stakeholders
- ❑ A Public Involvement Plan has been created



PD&E Study Milestone Schedule

PROJECT MILESTONES	2016		2017				2018				2019	
	Jul Aug Sep	Oct Nov Dec	Jan Feb Mar	Apr May Jun	Jul Aug Sep	Oct Nov Dec	Jan Feb Mar	Apr May Jun	Jul Aug Sep	Oct Nov Dec	Jan Feb Mar	Apr May Jun
Begin Study	◆											
Data Collection		■										
Public Kick-off Meeting				◆								
Engineering and Environmental Analyses			■									
Alternatives Public Workshop								◆				
Draft Documentation								■				
Public Hearing										◆		
Final Documentation										■		
Location and Design Concept Acceptance (Study Completed)												◆
Public Involvement	■											

← TONIGHT'S MEETING

Schedule Subject to Change

FDOT will coordinate meetings with the public, agencies and stakeholders throughout the entire study

Public Meetings

- Public Kick-off Meeting
- Alternatives Public Workshop
- Public Hearing

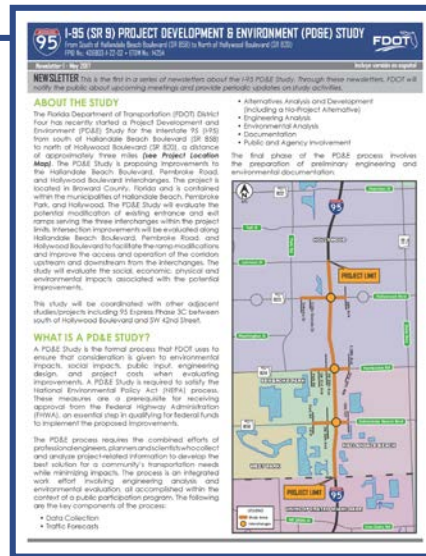
Other Meetings

Newsletters

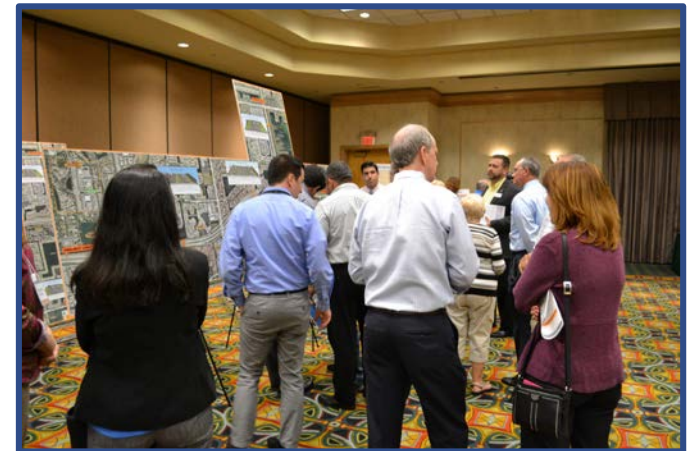
Project Website

Coming Soon!

- Small Group Meetings
- One-on-One Stakeholder Meetings
- Metropolitan Planning Organization (MPO) Board and Committee Meetings



1. Review exhibits on display here tonight.
2. Discuss the project with FDOT personnel.



1. Place a completed comment form in comment box provided here tonight.
2. Email your comments.
3. Mail your comments.



Kenzot Jasmin

**Project Manager
Florida Department of Transportation
District Four
Consultant Management**

(954) 777-4462

Kenzot.Jasmin@dot.state.fl.us





PROJECT DEVELOPMENT & ENVIRONMENT (PD&E) STUDY

Interstate 95 (I-95/SR 9) • From South of Hallandale Beach Boulevard (SR 858) to North of Hollywood Boulevard (SR 820)
Broward County, FL • FPID No.: 436903-1-22-02 • ETDM No.: 14254

THANK YOU!

